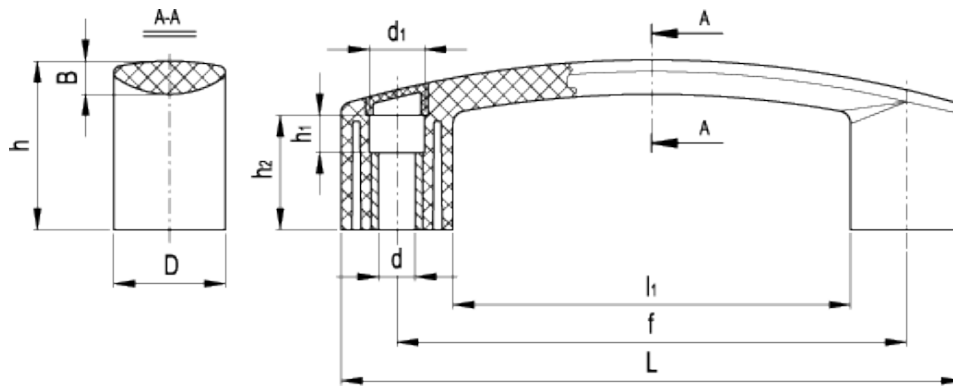


EBP.FLX

Flexible bridge handles



ELESA Original design



technical informations

Material

Polypropylene based (PP) technopolymer elastomer-added (TPE). Resistant to solvents, oils, greases and other chemical agents.

Colour

Grey-black, matte finish.

Caps

Polyamide based (PA) technopolymer in Ergostyle colours, matte finish. Supplied not assembled, press-fit assembly, removable by a screwdriver. Available also as accessory sold separately (see caps table).

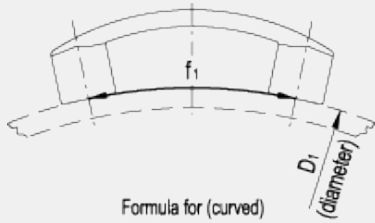
Assembly

Brass bosses with through holes for cylindrical-head screws with hexagon socket.

Features and applications

This handle is suitable for assembly on curved surfaces thanks to its special material which makes it flexible.

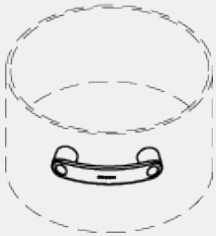
It is suitable for applications on curved surfaces with diameters between 300 and 800 mm. For diameters exceeding 800 mm, [EBP](#). series handle can be used.



Formula for (curved) centers distance f_1

EBP.140	$f_1 = 0.044 \times D_1 + 81.5$
EBP.180	$f_1 = 0.056 \times D_1 + 102.8$

Application example

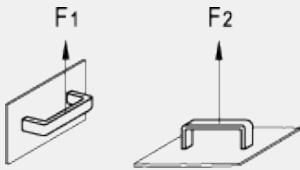


Technical data

Tensile stress: F_1 and F_2 values reported in the table represent the maximum limit value under which EBP.FLX handle can perform elastic deformation.

Impact strength does not apply in this case due to the high elastic features of the product.

All values are the result of breaking tests carried out with the appropriate dynamometric equipment under the test conditions shown in the figure at ambient temperature.



C1 RAL 7021 **C2** RAL 2004 **C3** RAL 7035 **C4** RAL 1021 **C5** RAL 5024 **C6** RAL 3000

Standard Elements		Main dimensions						Mounting holes				F_1	F_2	Weight
Code	Description	L	f	D	h	B	l_1	d	d_1	h_1	h_2	[N]	[N]	g
260262-*	EBP.140-8-FLX-*	144	117	26	39	8.5	92	8.5	13.5	8.5	26.5	1000	1000	56
260361-*	EBP.180-8-FLX-*	178	150	28	45	9.5	122	8.5	13.5	14	32	1000	1000	67

* Complete the code and the description of the standard item needed by adding the index of the colour of the caps (C1, ..., C6) ex: 260261-C2 EBP.140-8-FLX-C2

Code	Description	Caps for
29831-*	ECA.B1-*	EBP.140-FLX / EBP.180-FLX

* Complete the code and the description by adding the index of the colour (C1, ..., C6).

This product had the following design awards:





ELESA models all rights reserved in accordance with the law. Always mention the source when reproducing our drawings.

STANDARD MACHINE ELEMENTS WORLDWIDE